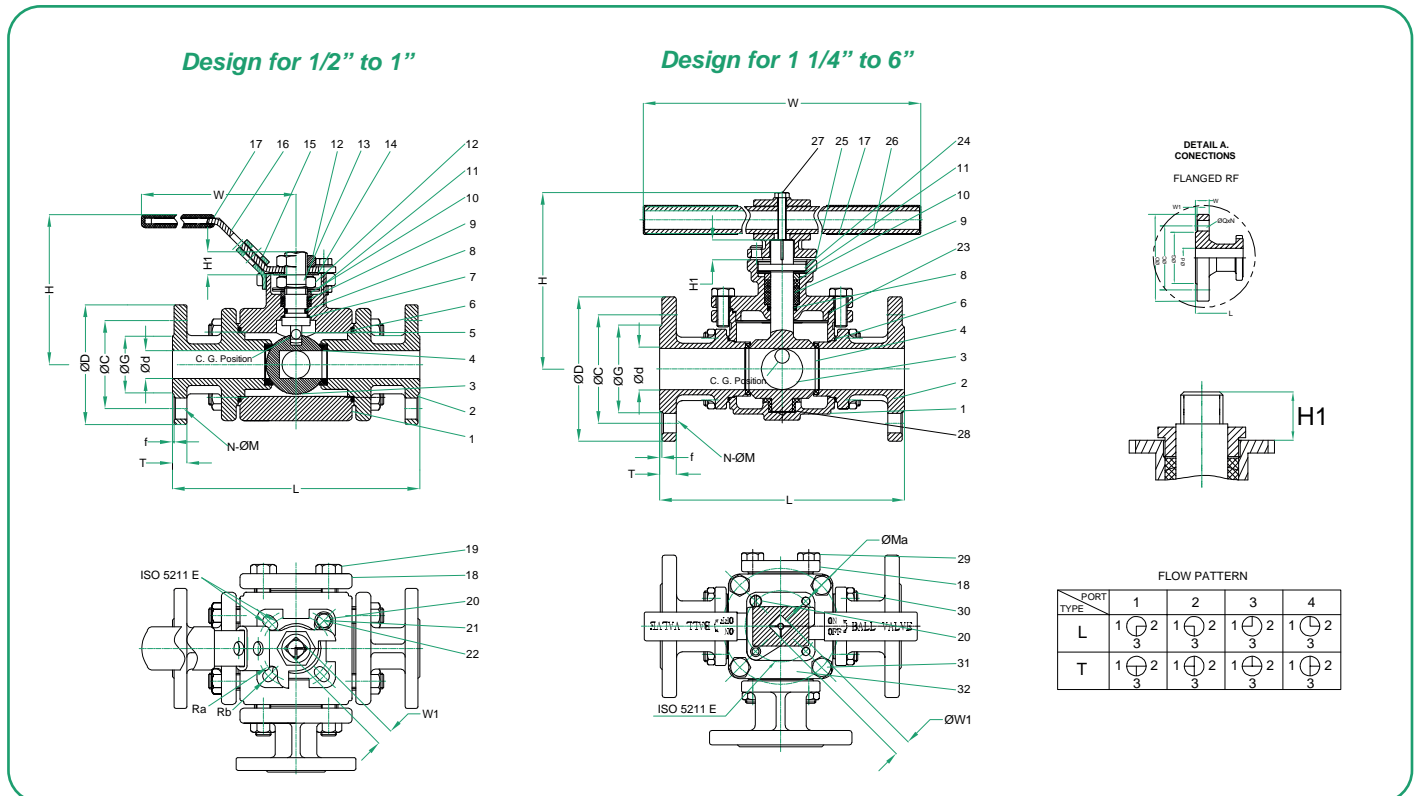


Features / Design



- 1.- **Cost Efficient.** One valve can replace two or more valves, reduces the number of valves in piping system.
- 2.- **ISO 5211 Mounting Pad.** Allows direct mounting of pneumatic and electric actuators, no brackets and coupling needed. Easy and low cost for automated service.
- 3.- Investment cast body construction.
- 4.- Three independent flanged ends design.
- 5.- **Four seats design.** Glass fiber reinforced PTFE seats.
- 6.- Live loaded and adjustable stem packing.
- 7.- Blow-Out stem proof.
- 8.- "L" Port / "T" Port.⁽¹⁾
 Flanged ends Class 150# acc. to ASME B16.5 (300# available upon request).
- 10.- Locking device.
- 11.- Antistatic device.
- 12.- Manufactured in ISO 9001 approved facility.



NOTE:
(1) Port "X" available upon request.



Material List

NO.	DESCRIPTION	CARBON STEEL OPTION	STAINLESS STEEL OPTION
1	BODY	ASTM A216 WCB	ASTM A351 WCB
2	CAP	ASTM A216B WCB	ASTM A351 WCB
3	BALL	ASTM A351 CF8M	ASTM A351 CF8M
4	SEAT	R-PTFE	R-PTFE
5	STEM	ASTM A182 F316	ASTM A182 F316
6	GASKET	P-PTFE	P-PTFE
7	THRUST WASHER	PTFE	PTFE
8	O-RING	VITON	VITON
9	PACKING	R-PTFE	R-PTFE
10	GLAND	ASTM A182 F304	ASTM A182 F316
11	SPRING WASHER	AISI 301	AISI 301
12	STEM NUT	ASTM A182 F304	ASTM A182 F316
13	STOP WASHER	ASTM A182 F304	ASTM A182 F316
14	HANDLE WASHER	ASTM A182 F304	ASTM A182 F316
15	LOCKING DEVICE	ASTM A182 F304	ASTM A182 F316
16	HANDLE	ASTM A182 F304	ASTM A182 F316
17	PLASTIC COVER	PLASTIC	PLASTIC
18	CAP-A	ASTM A351 CF8M	ASTM A351 CF8M
19	BOLT	ASTM A182 F304	ASTM A182 F316
20	STOP PIN	ASTM A182 F304	ASTM A182 F316
21	BOLT	ASTM A182 F304	ASTM A182 F316
22	NUT	ASTM A182 F304	ASTM A182 F316
23	GASKET	R-PTFE	R-PTFE
24	CAP-C	ASTM A216 WCB	ASTM A351 CF8M
25	HANDLE HEAD	ASTM A351 CF8M	ASTM A351 CF8M
26	HANDLE TYPE "T"	GALVANIZED PIPE	GALVANIZED PIPE
27	HANDLE BOLT	ASTM A182 F304	ASTM A182 F316
28	SLEEVE	R-PTFE	R-PTFE
29	CAP-B BOLT	ASTM A182 F304	ASTM A182 F316
30	BOLT	ASTM A182 F304	ASTM A182 F316
31	CAP-A BOLT	ASTM A182 F304	ASTM A182 F316
32	CAP-D	ASTM A216 WCB	ASTM A351 CF8M

Dimensions (inches)

ANSI 150#

NPS (in)	d (in)	D (in)	C (in)	G (in)	T (in)	f (in)	N (in)	M (in)	L (in)	H (in)	W (in)	ISO 5211	E (in)	H1 (in)	W1 (in)	WEIGHT (lb)		Torque (lbf*in)	CV (Usgpm)	
																Port L	Port T		Port L	Port T
1/2"	0.591	3.504	2.382	1.378	0.437	0.063	4	0.6299	5.8268	3.1496	4.8425	F03-F04	1.417-1.653	0.354	0.354	8.289	8.069	27.290	10	16
3/4"	0.787	3.858	2.756	1.693	0.437	0.063	4	0.6299	6.0236	3.3071	4.8425	F03-F04	1.417-1.653	0.354	0.354	11.685	11.574	34.666	14	24
1"	0.984	4.252	3.130	2.008	0.437	0.063	4	0.6299	6.6142	3.7795	6.0236	F04-F05	1.653-1.968	0.433	0.433	17.196	16.976	40.566	25	45
1 1/4"	1.260	/	/	/	/	0.063	/	/	/	/	/	/	2.756	/	/	/	/	/	/	/
1 1/2"	1.575	5.000	3.878	2.874	0.563	0.063	4	0.6299	8.7008	6.7323	15.8661	F07	2.756	0.748	0.669	28.219	27.778	59.006	56	100
2"	1.969	5.984	4.744	3.622	0.626	0.063	4	0.7480	10.0000	6.9291	15.8661	F07	2.756	0.748	0.669	35.869	35.605	81.133	110	430
2 1/2"	2.559	7.008	5.492	4.134	0.689	0.063	4	0.7480	11.8110	8.1890	19.8425	F10	4.016	0.945	0.866	60.848	58.423	125.387	160	670
3"	2.992	7.480	6.004	5.000	0.752	0.063	4	0.7480	12.0079	8.5039	19.8425	F10	4.016	0.945	0.866	74.957	74.737	154.890	260	1170
4"	3.780	9.016	7.500	6.181	0.941	0.063	8	0.7480	14.5276	9.2913	25.7480	F10	4.016	0.945	0.866	139.773	1136.466	199.144	430	2070
6"	5.827	10.984	9.508	8.504	1.000	0.063	8	0.8661	18.8976	12.9528	31.4961	F14	5.512	1.496	1.417	332.898	328.489	195.029	980	5000

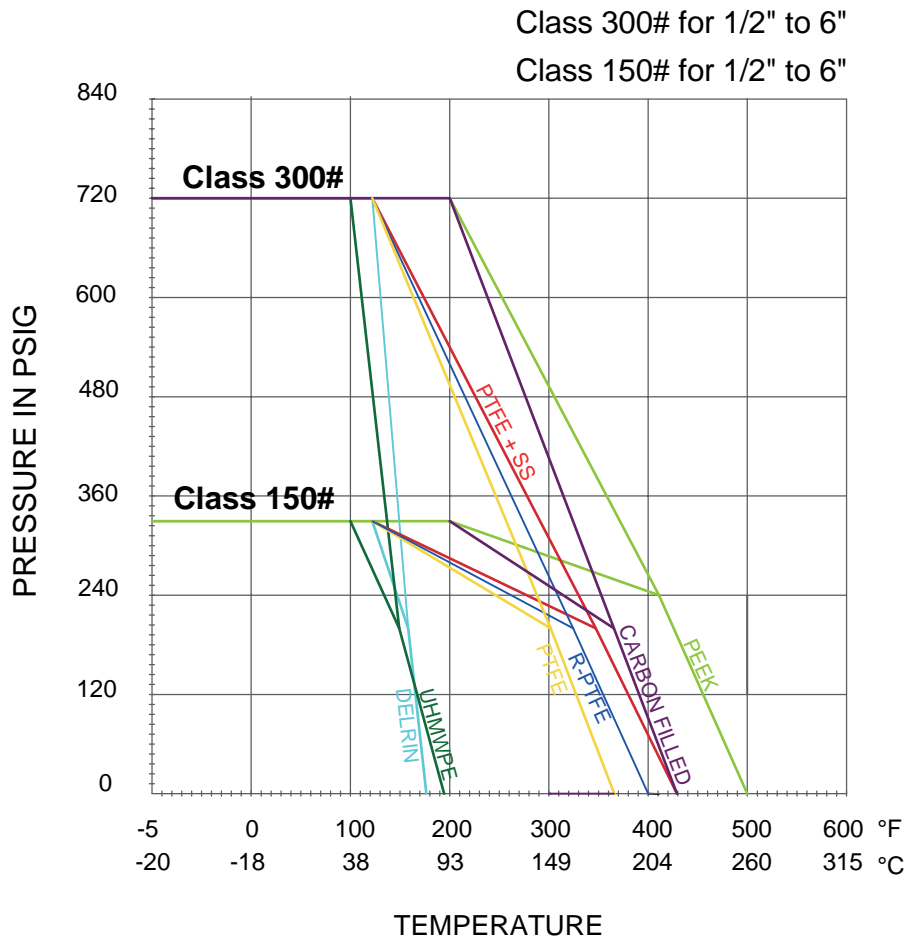


Dimensions (inches) - Cont.

ANSI 300#

NPS (in)	d (in)	D (in)	C (in)	G (in)	T (in)	f (in)	N (in)	M (in)	L (in)	H (in)	W (in)	ISO 5211	E (in)	H1 (in)	W1 (in)	WEIGHT (lb)		Torque (lbf*in)	CV (Usgpm)	
																Port L	Port T		Port L	Port T
1/2"	0.591	3.740	2.618	1.378	0.563	0.063	4	0.6299	6.2992	3.1496	4.8425	F03-F04	1.417-1.653	0.354	0.354	9.700	9.921	27.290	3	8
3/4"	0.787	4.606	3.248	1.693	0.626	0.063	4	0.7480	6.4961	3.3071	4.8425	F03-F04	1.417-1.653	0.354	0.354	15.212	15.653	42.042	22	13
1"	0.984	4.882	3.504	2.008	0.689	0.063	4	0.7480	7.0866	3.7795	6.0236	F04-F05	1.653-1.968	0.433	0.433	21.826	22.267	40.566	35	21
1 1/4"	1.260	5.236	3.878	2.520	0.752	0.063	4	0.7480	8.7008	6.7323	15.8661	F07	2.756	0.748	0.669	31.747	32.188	59.006	58	40
1 1/2"	1.575	6.142	4.508	2.874	0.815	0.063	4	0.8661	9.2126	6.7323	15.8661	F07	2.756	0.748	0.669	37.258	37.699	59.006	85	49
2"	1.969	6.496	5.000	3.622	0.878	0.063	8	0.7480	10.0000	6.9291	15.8661	F07	2.756	0.748	0.669	43.211	43.431	81.133	160	93
2 1/2"	2.559	7.480	5.866	4.134	1.000	0.063	8	0.8661	11.8110	7.7953	19.8425	F10	4.016	0.945	0.866	69.005	71.430	125.387	267	154
3"	2.992	8.268	6.614	5.000	1.126	0.063	8	0.8661	12.0079	8.5039	19.8425	F10	4.016	0.945	0.866	91.271	92.374	154.890	365	211
4"	3.780	10.000	7.874	6.181	1.252	0.063	8	0.8661	14.5276	9.2913	25.7480	F10	4.016	0.945	0.866	162.040	165.126	199.144	649	375
6"	5.827	12.520	10.630	8.504	1.441	0.063	12	0.8661	19.6063	12.9528	31.4961	F14	5.512	1.496	1.417	381.620	385.368	295.029	1400	780

Pressure-Temperature Chart



How to Order

VALVE BODY DESIGN (SERIES)	SPECIAL FEATURES	MATERIAL			ENDS	CLASS	SIZE	OPERATION
		BODY	TRIM	SEAT				
3WL Full Port 3 Ways Ball Valve Port "L"	NONE None	2 WCB	3 316 SS	P PTFE	F Flanged RF	0 ANSI 150#	0.5 2"	L Manual Lever Operator
	F Fire Safe	3 CF8M		R R-PTFE		3 ANSI 300#	0.75 3/4"	B Bare Shaft
3WT Full Port 3 Ways Ball Valve Port "T"	O Oxygen Service ⁽²⁾			U UHMWPE			01 1"	G Gear Operator
				S 50/50 SS Filled PTFE		01.25 1 1/4"	S Spring Return Safety Handle ⁽³⁾	
3WX Full Port 3 Ways Ball Valve Port "X"				C Carbon Filled PTFE			01.5 1 1/2"	SR Spring Return Sliding Lock
				M MG1241			02 2"	O Oval Handle
3WLM ⁽⁴⁾ Full Port 3 Ways Ball Valve Port "L" ISO 5211 MK				D DELRIN			02.5 2 1/2"	E Economical Stem Extension
				K PEEK			03 3"	
3WTM ⁽⁴⁾ Full Port 3 Ways Ball Valve Port "T" ISO 5211 MK							04 4"	P Peumatic Actuator
							06 6"	E Electric Actuator
3WXM ⁽⁴⁾ Full Port 3 Ways Ball Valve Port "X" ISO 5211 MK								

Example:

3 Ways Full Port Ball Port "L" Valve, Body & Trim 316SS, Seats: PTFE, Ends: Flanged ANSI Class 150#, Size 2" with Lever.

3WL33PF002L

NOTES:

(2) Available for stainless steel valves only.

(3) Available for sizes 1/2" to 1", please contact us for more information.

(4) Please consult specific (brochure) information for 3WM Series.

