

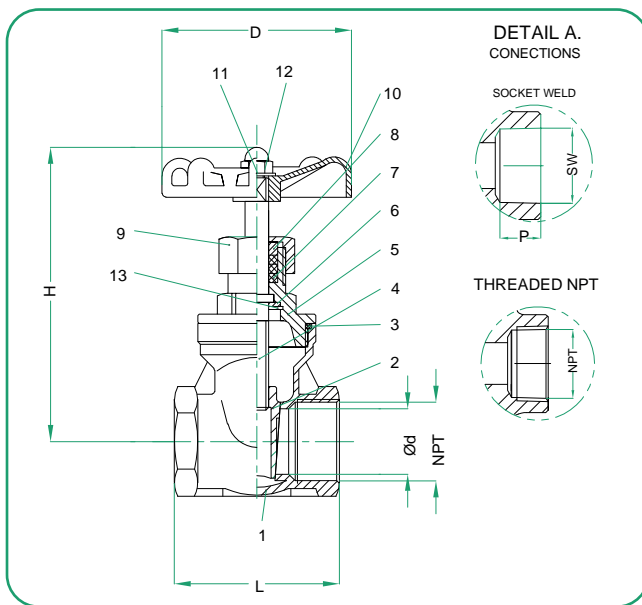


## Features

- 1.- Investment cast components.
- 2.- Inside screw NON-RISING stem design.
- 3.- Screwed bonnet, solid wedge disc design.
- 4.- For food, general chemical & industrial application.

## Design

- 5.- Codes & Standards: ASME B1.20.1 (NPT), ASME B16.11 (SW).
- 6.- End connections: Threaded / SW ends.
- 7.- Working pressure: 200 PSI / 16 Bar (CWP).
- 8.- Temperature range: -4 to 356 °F (-20 to 180°C).
- 9.- Pressure test according to API 598.



## Material List

POS.	DESCRIPTION	MATERIAL
1	BODY	ASTM A351 CF8M
2	DISC	ASTM A351 CF8M
3	SEAL RING	PTFE
4	STEM	AISI 316
5	BONNET	ASTM A351 CF8M
6	THRUST GASKET	PTFE
7	PACKING	PTFE
8	GLAND	STAINLESS STEEL
9	NUT	STAINLESS STEEL
10	HANDWHEEL	HT200
11	PAD	STAINLESS STEEL
12	NUT	STAINLESS STEEL
13	JUMP RING	STAINLESS STEEL

## Dimensions (inches)

NPS (in)	d (in)	H (in)	L (in)	D (in)	NPT (in)	SW (in)	P MIN (in)	CV (Usgal/min)	TORQUE (Lb * in)	Weight (Lb)
1/2"	0.571	3.740	2.126	2.520	1/2"	0.9 ± 0.008	0.374	3.3	*	0.83
3/4"	0.748	4.134	2.362	2.520	3/4"	1.1 ± 0.008	0.492	7.1	*	1.04
1"	0.945	4.528	2.480	2.874	1"	1.3 ± 0.008	0.492	12.3	*	1.35
1-1/4"	1.181	5.118	2.795	2.992	1-1/4"	1.7 ± 0.008	0.492	20.6	*	1.92
1-1/2"	1.496	5.709	3.071	3.858	1-1/2"	1.9 ± 0.008	0.492	28.3	*	2.84
2"	1.890	6.299	3.465	3.858	2"	2.4 ± 0.008	0.629	47.0	*	3.75



## How to Order

CLASS	VALVE BODY DESIGN	MATERIAL			ENDS	SIZE	
		BODY	TRIM	SEAT			
NONE 200# WOG	5 Gate Non Rising Stem	3 CF8M	3 316SS	3 CF8M	T Threaded	0.5	1/2"
					S Socket Weld	0.75	3/4"
						1	1"
						01.25	1 1/4"
						01.5	1 1/2"
						02	2"

**Example:**

Gate Valve, Body ASTM A351 Gr CF8M & Disc 316SS, Metal to Metal Seat, Threaded 200# WOG, Size 2".

**5333T02**

