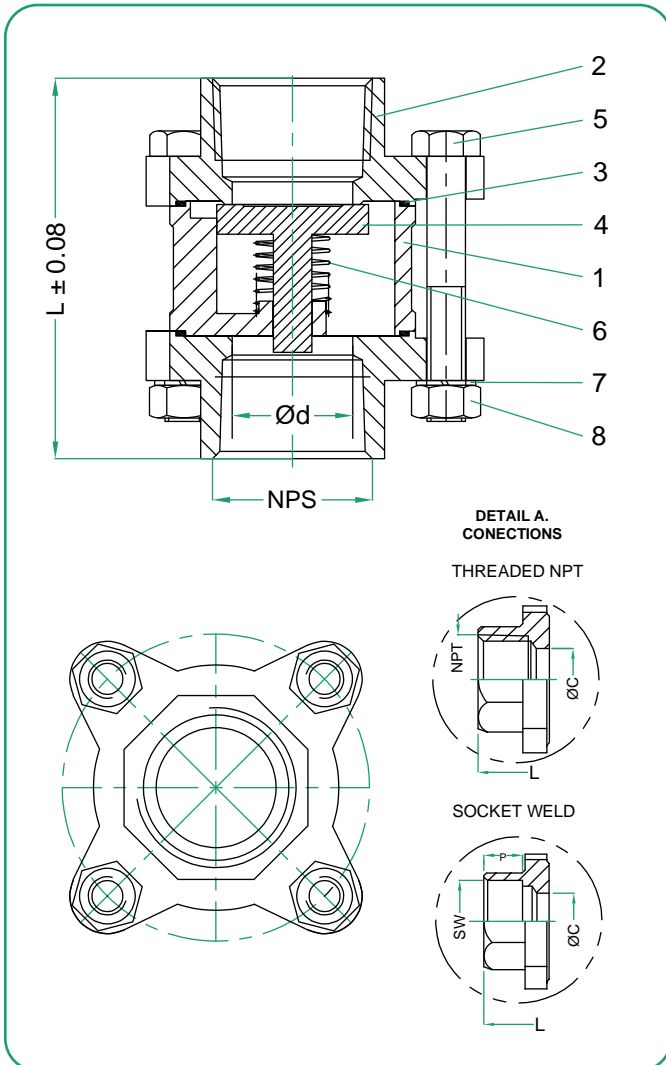




## Features / Design

- 1.- Investment cast components.
- 2.- Horizontal or vertical installation.
- 3.- Highest degree of tightness.
- 4.- Light weight, low pressure drop.
- 5.- For food, general chemical & industrial applications.
- 6.- ASME B16.34, API 598.
- 7.- Ends: SW (ASME B1.20.1) & NPT (ASME B16.11).
- 8.- Face to face: MFG, standard.
- 9.- Pressure Rating: 1,000 PSI W.O.G.
- 10.- Temperature range: -4 to 356° F.
- 11.- Pressure testing according to API 598.



## Material List

NO.	PART NAME	MATERIAL
1	BODY	A351 CF8M
2	BONNET	A351 CF8M
3	SEAL RING	PTFE
4	DISC	SS316
5	BOLT	STAINLESS STEEL
6	SPRING	SS316
7	SPRING WASHER	STAINLESS STEEL
8	NUT	STAINLESS STEEL

## Dimensions (inches)

SIZE	d (in)	L (in)	NPT (in)	SW (in)	P (in)
1/4"	0.394	2.283	1/4"	0.567±0.008	0.374
1/2"	0.591	2.362	1/2"	0.866±0.008	0.374
3/4"	0.787	2.756	3/4"	1.078±0.008	0.492
1"	0.984	3.110	1"	1.342±0.008	0.492
1 1/4"	1.260	3.661	1 1/4"	1.689±0.008	0.492
1 1/2"	1.496	3.976	1 1/2"	1.929±0.008	0.492
2"	1.969	4.567	2"	2.419±0.010	0.630
2 1/2"	2.559	4.803	2 1/2"	2.919±0.010	0.630



## How to Order

CLASS	VALVE BODY DESIGN (SERIES)	MATERIAL			ENDS	SIZE	
		BODY	DISC	SEAT			
8 1000 WOG	7TL 3 PCS Spring Loaded Check Valve	3 CF8M	3 316 SS	3 316 SS	T Threaded	0.25 1/4"	
						S Socket Weld	0.5 1/2"
						0.75 3/4"	
						01 1"	
						01.25 1 1/4"	
						01.5 1 1/2"	
						02 2"	
						02.5 2 1/2"	

**Example:**

3 Pes Spring Loaded Check Valve, Body ASTM A351 Gr. CF8M & Disc 316SS, Seat PTFE, Threaded, Maximum Working Pressure 800# CWP, Size 2".

**87TL333T02**